

RECOLX

AI VOICE RECORDER

Model: JYDH-100

User Manual



Scan the QR code to visit
the official website for

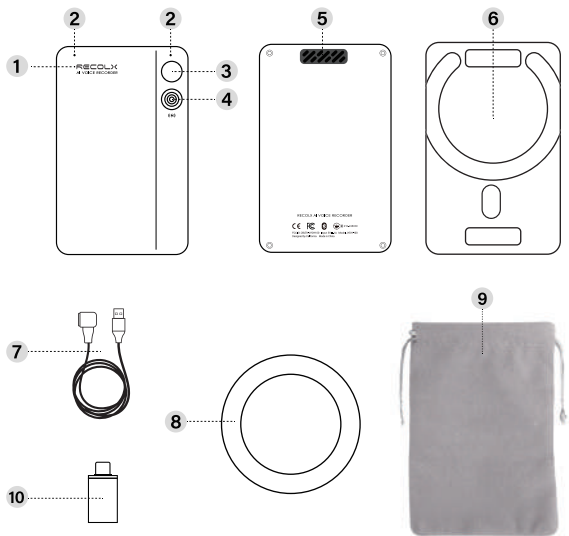
- 1 App downloads
- 2 Customer support
- 3 Detailed product information

Official Website: <https://recolx.ai>

Customer Support: US: support@recolx.ai

App for Download: For Android users: RECOLX (Google Play)
For iOS users: RECOLX (App Store)

PACKAGE INCLUDING



1 Indicator Light

2 Microphone*2

3 Function Button

4 Charging Port

5 Bluetooth Signal

6 Protective Case

7 Charging Cable

8 Magnetic Ring

9 Carrying Pouch

10 USB to USB-C OTG Adapter

QUICK GUIDE

01 Indicator Light Status Description

Status	Button Operation	Light Color	Vibration Feedback
Charging	None	Green light flashes slowly	None
Fully Charged	None	Green light stays on	None
Data Transfer	None	Blue light flashes quickly	None
Power On	Press for 1 second to power on, defaulting to Bluetooth pairing mode.	Blue light flashes slowly	Short vibration feedback once
Bluetooth Pairing	After powering on, it automatically enters Bluetooth pairing mode.	Blue light flashes slowly	None
Bluetooth Connected	Automatically switches when Bluetooth is successfully connected.	Blue light stays on	None
Recording Started	Press and hold for 0.5 seconds to start recording.	Red light stays on	Short vibration feedback twice
Recording Stopped	Press and hold for 0.5 seconds to stop recording.	Red light goes off	Short vibration feedback once
Recording Paused	None (control by APP).	Red light flashes	None
Standby	None	No light (short press to show current device status)	None
Power Off	Press and hold for 6 seconds.	None	Long vibration

02 Usage Tips

- The device will enter standby mode after 15 minutes of inactivity or no data transmission.
- In standby mode, the device will automatically power off after 30 minutes by default.
- The RECOLX App can control functions such as light and vibration switches.

03 Important Notice for iPhone Users

When uploading recorded files to the app or cloud, the process may take some time. If your iPhone screen turns off during the upload, the process may be interrupted. To prevent this, please adjust your Auto-Lock settings:

How to Keep Your iPhone Screen On During Uploads

- ① Open Settings.
- ② Tap Display & Brightness.
- ③ Select Auto-Lock.
- ④ Set it to Never.

If needed, you can change this setting back after uploading.

HOW TO CONNECT THE DEVICE ?

01



RECOLX

RECOLX



Download on the
App Store



GET IT ON
Google Play

- Search for 'RECOLX' in the App Store or Google Play to download the RECOLX app.
- After installation, create your RECOLX account and log in.

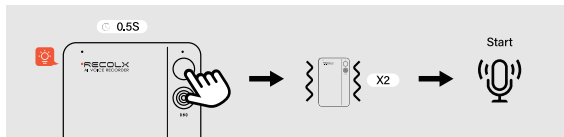
02



- Press the function button briefly to power on your RECOLX Recorder.
- The blue indicator light will blink and you will feel a short vibration, indicating that your RECOLX Recorder is ready to pair with your RECOLX app.

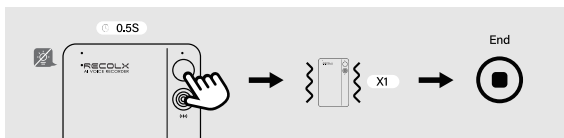
02 Start Recording

Press and hold the function button for 0.5 seconds to start recording. You will feel two short vibrations, and the red indicator light will stay on, indicating that recording has begun.



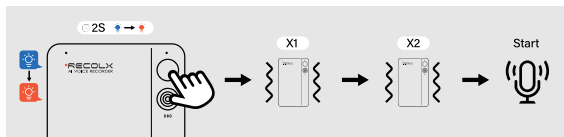
03 End Recording

Press the record button for 0.5 seconds until you feel one vibration, and the red indicator light will turn off, indicating that the recording has stopped.



04 Quick Start Recording – Power On & Record with One Press

After the first connection, press and hold the function button for 2 seconds. You will feel one vibration as the device powers on, followed by two more vibrations to indicate that recording has started.



IMPORTANT SAFETY INSTRUCTIONS



Warning: Failure to follow these safety instructions could result in fire, electric shock, injury, or damage to **RECOLX RECORDER** or other property. Please read all the safety information below before using your **RECOLX RECORDER**.

01 Charging Guidelines

- Do not use the device while charging.
- Use only the original charging cable or a compatible power adapter to avoid damage caused by unstable voltage.
- Keep the charging area dry and away from water or high-humidity areas to prevent electric shock or short circuits.
- Disconnect the device from the power source once charging is complete to avoid overcharging, which may affect battery lifespan.
- Do not leave the device unattended while charging.
- **WARNING:** Do not expose the device or battery to extreme heat, including direct sunlight or fire.

02 Usage Guidelines

- This product is not designed for use in extreme conditions, such as temperatures exceeding 60° C (140° F) or below -20° C (-4° F), high humidity, or environments with heavy vibration.
- Do not disassemble or modify the device, as this may cause damage or void the warranty.
- This product complies with applicable privacy and data protection laws. Ensure responsible use of recording features to respect other's privacy. Recording others without consent may violate laws, and users assume full responsibility for any legal consequences.
- This product is not intended for applications where its failure could impact life, health, or the environment (e.g., life support devices, emergency medical systems, or aerospace navigation) or for any high-risk activities that could lead to serious injury, death, or significant environmental harm.

03 Storage Guidelines

- Store the device in a cool, dry place, away from direct sunlight and heat sources.
- If the device is not in use for an extended period, recharge it once a month to maintain battery health.
- Keep the device away from strong magnetic fields, humid environments, and corrosive gases to prevent damage to internal components.
- When cleaning the device, use a soft, dry cloth and avoid chemical solvents.

04 Warranty and Liability Limitations

- RECOLX is not responsible for damages caused by misuse, improper installation, unauthorized modifications or repairs, or the use of non-genuine accessories.
- To the extent permitted by law, RECOLX disclaims any liability for indirect, incidental, or consequential damages, including loss of data or profits.
- The software and firmware of this product may be updated periodically to improve performance or add features. Actual usage may differ from the documentation, and the manufacturer reserves the right to make updates or changes without prior notice.

05 Data Security

- We recommend safeguarding your data stored on the device and regularly backing it up. The manufacturer is not responsible for data loss caused by device malfunctions, user errors, or uncontrollable factors.
- This product adheres to industry standards for recording, data storage, and transmission. However, the manufacturer cannot guarantee complete protection against third-party breaches or data leaks.
- The device complies with applicable data privacy laws in your region (such as GDPR, CCPA).

FCC REGULATORY CONFORMANCE

Note: This equipment has been tested and found to comply with the limits for a Class B digital device, pursuant to Part 15 of the FCC Rules. These limits are designed to provide reasonable protection against harmful interference in a residential installation.

This equipment generates, uses, and can radiate radio frequency energy and, if not installed and used in accordance with the instructions, may cause harmful interference to radio communications. However, there is no guarantee that interference will not occur in a particular installation. If this equipment does cause harmful interference to radio or television reception, which can be determined by turning the equipment off and on, the user is encouraged to try to correct the interference by one or more of the following measures:

- Reorient or relocate the receiving product or antenna.
- Increase the separation between the equipment and receiver.
- Connect the equipment into an outlet on a circuit different from that to which the receiver is connected.
- Consult the dealer or an experienced radio/TV technician for help.

Changes or modifications not expressly approved by the party responsible for compliance could void the user's authority to operate the equipment.

This device complies with part 15 of the FCC Rules.

Operation is subject to the following two conditions: (1) This device may not cause harmful interference, and (2) this device must accept any interference received, including interference that may cause undesired operation.

CUSTOMER SERVICE



<https://recolx.ai>

Scan the QR code to visit the official product website, where you can find:

1. Detailed product information
2. Product usage guide, including instructions on how to download the app, connect the device, and tutorial videos
3. Relevant terms and policies
4. Customer support
5. Comments & Suggestions – Share your ideas with us!



Email:

support@recolx.ai



Hours:

Monday - Sunday, Response within 12 hours



210-248039

FCC ID: 2BLTK-JYDH100

Designed by California

Made in China